

PROMINENT[™]
SOLUTIONS WITH INNOVATION

**BMT TOOL DISC &
TOOL HOLDERS** FOR
CNC TURNING & TURNMILL CENTERS



HOLDING THE POWER TO CHANGE

www.prominenttools.com



Dear Customer

It is indeed our pleasure to present our comprehensive new catalogue to you.

We have endeavoured and developed a user friendly catalogue, which you may find very helpful. Quality is the essence of our business, & is all pervasive in our manufacturing operations. You may observe same quality pursuit, in this latest catalogue of ours also.

Our new introductions BMT Tool Holders, VDI Tool holders DIN 69880 through coolant reduction sleeves & slit sleeves fill an important need, for more, high speed machining applications, especially in the field of aerospace industry.

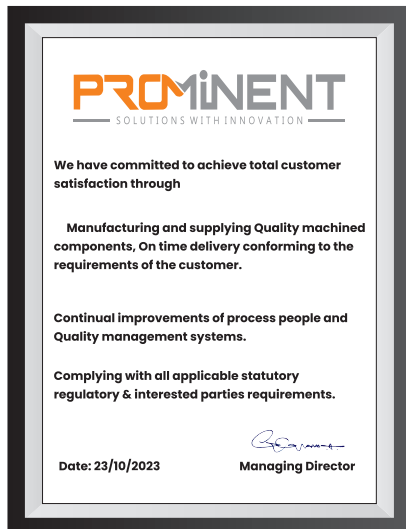
Our customer friendly, expert application engineers, with their available for you, if required, for developing appropriate cost effective tool holding solution, we are always at your services, for any special requirements of yours too. Which is our specialty and well recognized by discerning customers.

Your valued suggestions are always welcome.

STARTED
2021

20
EXPERIENCE

COMMITTED
TO MEET
AND EXCEED
CUSTOMER
EXPECTATIONS
— IN —
QUALITY
DELIVERY
C O S T

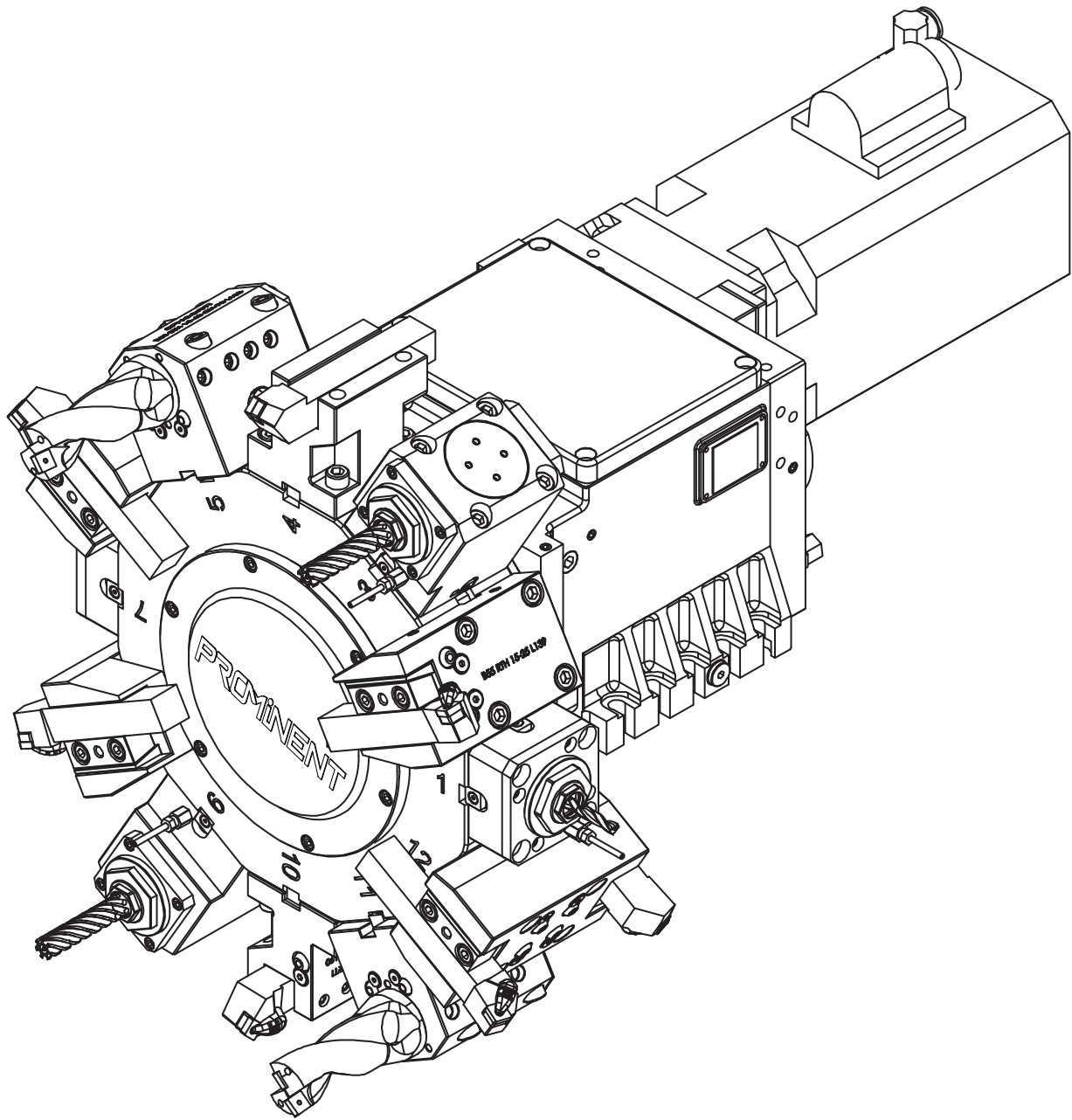


We are proud to announce that we are an ISO 9001:2015 Company re certified by TUV INDIA



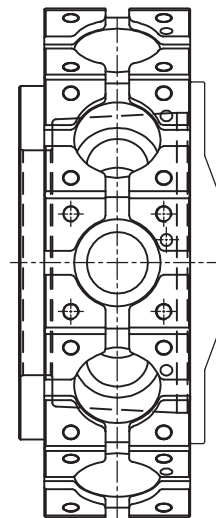
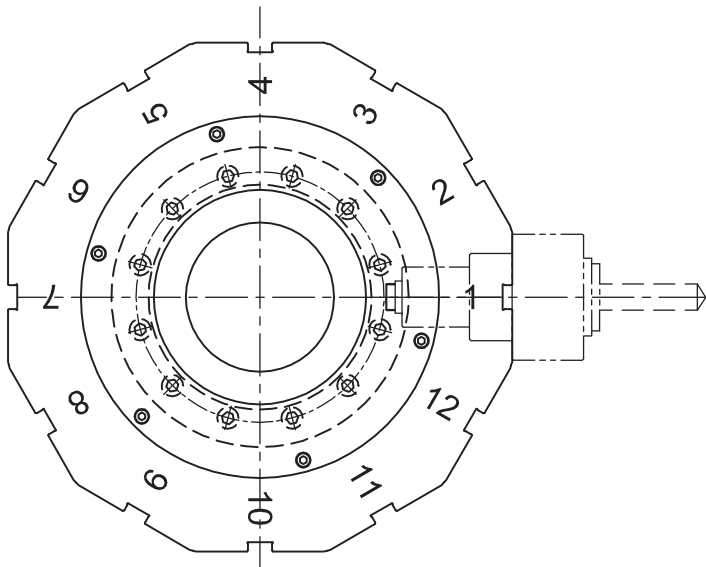
Our Commitment to Greater & Consistent Quality is the Driving Force Behind Our Quest for Customer Satisfaction







BMT TOOL DISC



- Available in 12 Station as our standard.
 - Made out of Forged, Medium Carbon Steel & Toughened to 20 ± 2 HRC.
 - Finish machining on High Precision Machining Centers to ensure accuracies.
 - Suitable for fitment on BMT turrets.
 - Customized design can be supplied upon request.
- * BMT Tool disc can be supplied as per customer drawing





BMT TOOL HOLDERS - AS PER DIN 1809 DRIVEN TOOL HOLDERS

COMPATIBLE WITH MACHINE MANUFACTURER

DOOSAN	ACE DESIGNERS
HARDINGE	BFW
HWACHEON	GOODWAY
HYUNDAI WIA	JYOTI CNC
SAMSUNG	LEADWELL
SMART	LMW
VICTOR	SPINNER

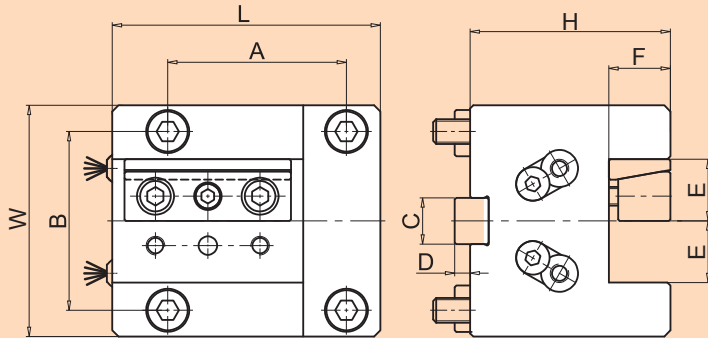
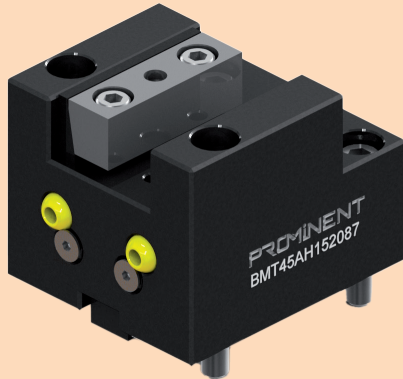
COMPATIBLE WITH TURRETS & HOLDERS MANUFACTURER

TURRET MAKE	TOOL HOLDER MAKE
BARUFFALDI	EPPINGER
DIPLOMATIC	EWS
EWS	HEIMATEC
PRAGATI	WTO
SAUTER	

BMT DRIVEN Holders can be supplied as per customer request

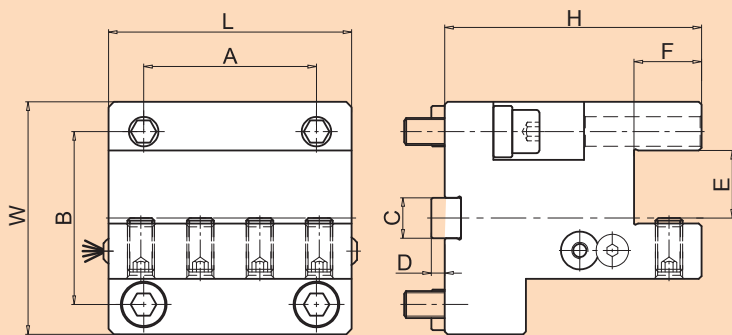
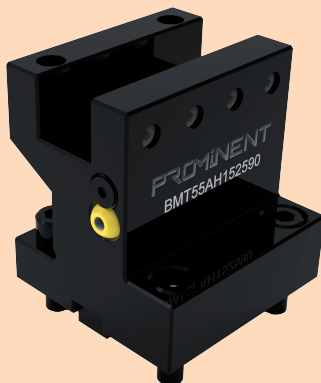


BMT STATIC TOOL HOLDERS AXIAL TOOL HOLDER TYPE - 1



ITEM NAME	ORDER CODE	A	B	C	D	E	F	L	W	H
BMT45-ATH 15-20 L 87	BM45A152087	58	58	15	5	20	20	87	75	65
BMT45-ATH 15-20 L 103	BM45A1520103	58	58	15	5	20	20	103	75	60
BMT55-ATH 15-25D L 90	BM55A152590	64	64	15	5	25	25	90	86	95
BMT55-ATH 15-25D L 105	BM55A1525105	64	64	15	5	25	25	105	86	70
BMT65-ATH 18-25 L 105	BM65A1825105	70	73	18	5	25	25	105	96	95
BMT65-ATH 18-25 L 125	BM65A1825125	70	73	18	5	25	25	125	96	93
BMT75-ATH 25-25 L 140	BM75A2525140	90	90	25	6	25	25	140	112	70
BMT75-ATH 25-32 L 135	BM75A2532135	90	90	25	6	32	32	135	112	60
BMT85-ATH 25-32 L 156	BM85A2532156	100	100	25	6	32	32	156	130	90

BMT STATIC TOOL HOLDERS AXIAL TOOL HOLDER TYPE - 2



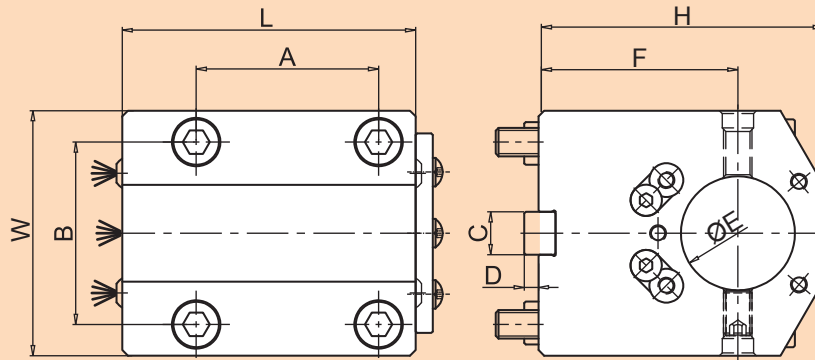
ITEM NAME	ORDER CODE	A	B	C	D	E	F	L	W	H
BMT55-ATH 15-20 L 90	BM55A152090	64	64	15	5	20	20	90	86	95
BMT55-ATH 15-25 L 90	BM55A152590	64	64	15	5	25	25	90	86	95
BMT65-ATH 18-25 L 115	BM65A1825115	70	73	18	5	25	25	115	96	95

* BMT Static tool Holders can be supplied as per customer drawing





BMT STATIC TOOL HOLDERS BORING TOOL HOLDER - 1

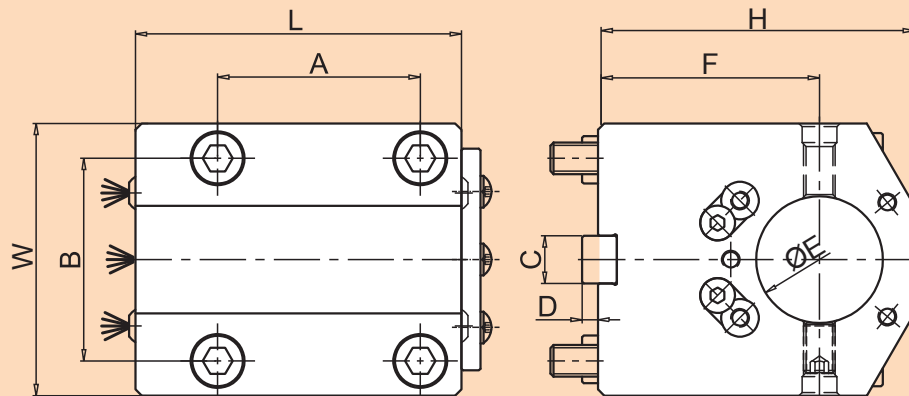


ITEM NAME	ORDER CODE	A	B	C	D	ØE	F	L	W	H
BMT45 BTH 15-25 CH65 L80	BM45B15256580	58	58	15	5	25	65	80	75	95
BMT45 BTH 15-32 CH65 L80	BM45B15326580	58	58	15	5	32	65	80	75	95
BMT45 BTH 15-40 CH65 L80	BM45B15406580	58	58	15	5	40	65	80	75	95
BMT45 BTH 15-32 CH65 L95	BM45B15326595	58	58	15	5	32	65	95	75	95
BMT45 BTH 15-32 CH65 L140	BM45B153265140	58	58	15	5	32	65	140	75	95
BMT45 BTH 15-32 CH85 L80	BM45B15328580	58	58	15	5	32	85	80	75	115
BMT55 BTH 15-40 CH60 L103	BM55B154060103	64	64	15	5	40	60	103	86	90
BMT55 BTH 15-32 CH70 L103	BM55B153270103	64	64	15	5	32	70	103	86	100
BMT55 BTH 15-40 CH70 L103	BM55B154070103	64	64	15	5	40	70	103	86	100
BMT55 BTH 15-40 CH70 L120	BM55B154070120	64	64	15	5	40	70	120	86	100
BMT55 BTH 15-40 CH85 L103	BM55B154085103	64	64	15	5	40	85	103	86	115
BMT55 BTH 15-40 CH100 L103	BM55B1540100103	64	64	15	5	40	100	103	86	130
BMT55 BTH 15-40 CH100 L 120	BM55B1540100120	64	64	15	5	40	100	120	86	130
BMT55 BTH 15-40 CHI 15 L90	BM55B154011590	64	64	15	5	40	115	90	86	150
BMT65 BTH 18-32 CH72 L127	BM65B183272127	70	73	18	5	32	72	127	96	102
BMT65 BTH 18-40 CH72 L127	BM65B184072127	70	73	18	5	40	72	127	96	102
BMT65 BTH 18-50 CH72 L127	BM65B185072127	70	73	18	5	50	72	127	96	112
BMT65 BTH 18-50 CH80 L120	BM65B185080120	70	73	18	5	50	80	120	96	114
BMT65 BTH 18-50 CH90 L127	BM65B185090127	70	73	18	5	50	90	127	96	130

* BMT Static tool Holders can be supplied as per customer drawing



BMT STATIC TOOL HOLDERS BORING TOOL HOLDER - 2

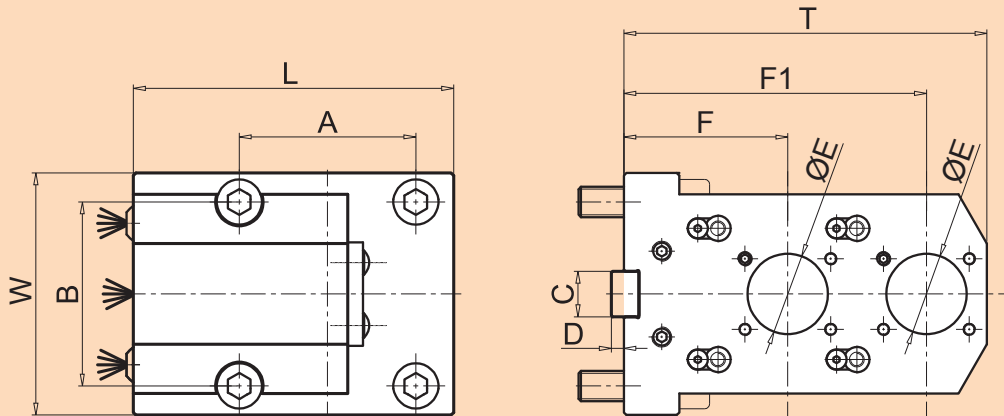
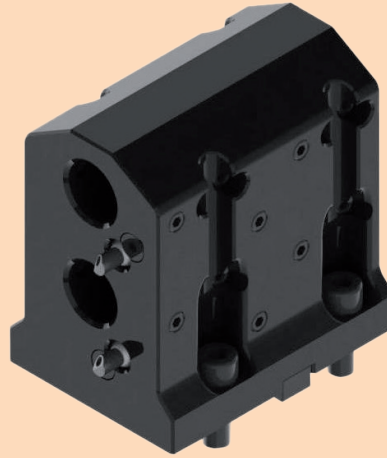


ITEM NAME	ORDER CODE	A	B	C	D	ØE	F	L	W	H
BMT65 BTH 18-32 CH100 L127	BM65B1832100127	70	73	18	5	32	100	127	96	135
BMT65 BTH 18-40 CH100 L127	BM65B1840100127	70	73	18	5	40	100	127	96	135
BMT65 BTH 18-50 CH100 L127	BM65B1850100127	70	73	18	5	50	100	127	96	135
BMT65 BTH 18-32 CH100 L 120	BM65B1832100120	70	73	18	5	32	100	120	96	130
BMT65 BTH 18-40 CH100 L 120	BM65B1840100120	70	73	18	5	40	100	120	96	130
BMT65 BTH 18-50 CH100 L120	BM65B1850100120	70	73	18	5	50	100	120	96	135
BMT65 BTH 18-40 CH115 L127	BM65B1840115127	70	73	18	5	40	115	127	96	150
BMT75 BTH 25-50 CH60 L165	BM75B255060165	90	90	25	6	50	60	165	112	110
BMT75 BTH 25-60 CH60 L165	BM75B256060165	90	90	25	6	60	60	165	112	110
BMT75 BTH 25-60 CH60 L165 FRB	BM75B256060165F	90	90	25	6	60	60	165	112	110
BMT75 BTH 25-60 CH90 L 165	BM75B256090165	90	90	25	6	60	90	165	112	135
BMT75 BTH 25-60 CH110 L137	BM75B2560 10137	90	90	25	6	60	110	137	112	155
BMT85 BTH 25-80 CH60 L195	BM85B258060195	100	100	25	6	80	60	195	130	117
BMT85 BTH 25-80 CH85 L195	BM85B258085195	100	100	25	6	80	85	195	130	142





BMT STATIC TOOL HOLDERS DOUBLE BORING TOOL HOLDER

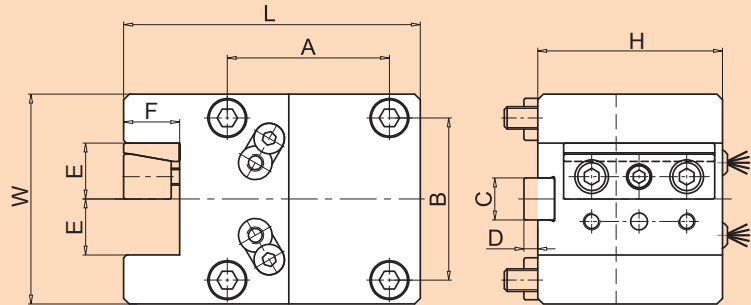
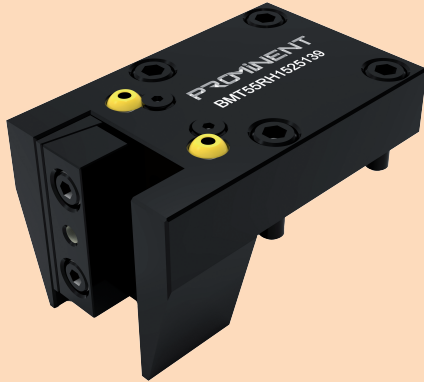


ITEM NAME	ORDER CODE	A	B	C	D	ØE	F	F1	L	W	H
BMT45 BTHD 15-20 CH55/100 L90.5	BM45D152055	58	58	15	5	20	55	100	90.5	75	115
BMT55 BTHD 15-20 CH85/120 LI 20	BM55D152085I20	64	64	15	5	20	85	120	120	86	135
BMT65 BTHD 18-25 CH65/120 L127	BM65D182565I27	70	73	18	5	25	65	120	127	96	144
BMT65 BTHD 18-32 CH65/120 L127	BM65D183265I27	70	73	18	5	32	65	120	127	96	144
BMT65 BTHD 18-25 CH85/130 L121	BM65D182585I21	70	73	18	5	25	85	130	121	96	152
BMT65 BTHD 18-32 CH70/110 L120	BM65D183270I20	70	73	18	5	32	70	110	120	96	132

* BMT Static tool Holders can be supplied as per customer drawing

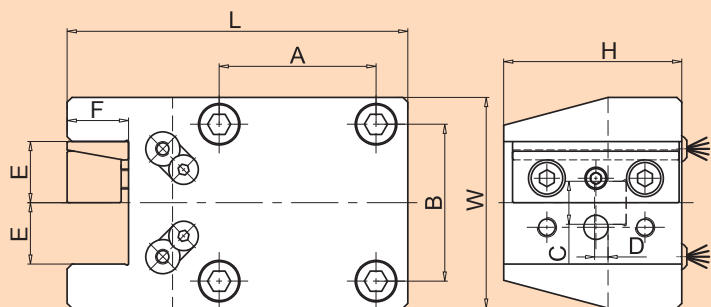
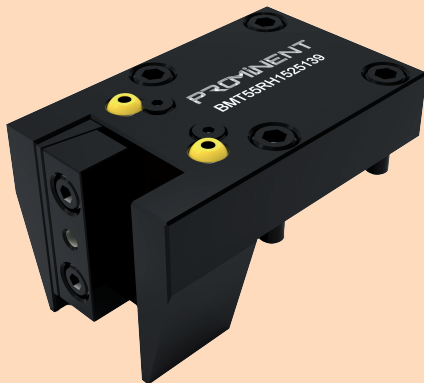


BMT STATIC TOOL HOLDERS RADIAL TOOL HOLDER TYPE - 1



ITEM NAME	ORDER CODE	A	B	C	D	E	F	L	W	H
BMT45-RTH 15-20 L 102	BM45R1520102	58	58	15	5	20	20	102	75	66
BMT45-RTH 15-20 L 106	BM45R1520106	58	58	15	5	20	20	106	75	66
BMT55-RTH 15-20 L 104	BM55R1520104	64	64	15	5	20	20	104	86	73
BMT55-RTH 15-25 L 120	BM55R1525120	64	64	15	5	25	25	120	86	60
BMT65-RTH 18-25 L 130	BM65R1825130	70	73	18	5	25	25	130	96	75
BMT65-RTH 18-25 L 104	BM65R1825104	70	73	18	5	25	25	104	96	75
BMT75-RTH 25-25 L 145.5	BM75R2525145.5	90	90	25	6	25	25	145.5	112	85
BMT75-RTH 25-32 L 150.5	BM75R2532150.5	90	90	25	6	32	32	150.5	112	85
BMT85-RTH 25-32 L 168.5	BM85R2532168.5	100	100	25	6	32	32	168.5	125	90

BMT STATIC TOOL HOLDERS RADIAL TOOL HOLDER TYPE - 2



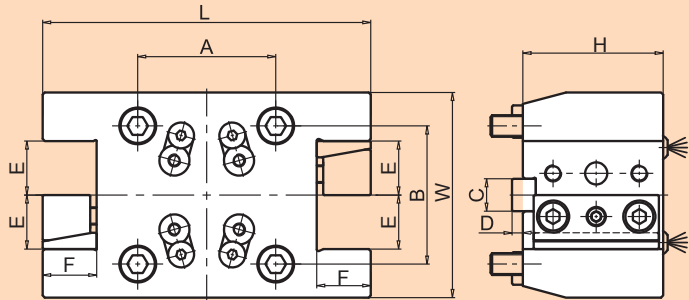
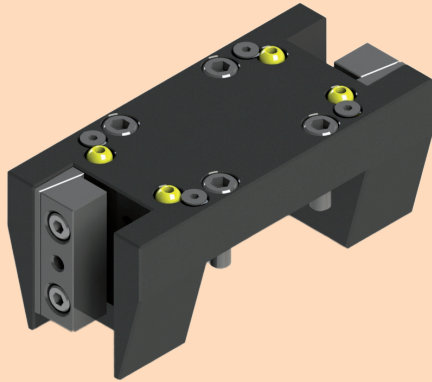
ITEM NAME	ORDER CODE	A	B	C	D	E	F	L	W	H
BMT45-RTH 15-20 L 127	BM45R1520127	58	58	15	5	20	20	127	75	66
BMT55-RTH 15-25 L 139	BM55R1525139	64	64	15	5	25	25	139	86	80
BMT65-RTH 18-25 L 150	BM65R1825150	70	73	18	5	25	25	150	96	75
BMT75-RTH 25-25 L 165	BM75R2525165	90	90	25	6	25	25	165	112	100
BMT75-RTH 25-32 L 168	BM75R2532168	90	90	25	6	32	32	168	112	100
BMT85-RTH 25-32 L 192	BM85R2532192	100	100	25	6	32	32	192	130	140

* BMT Static tool Holders can be supplied as per customer drawing



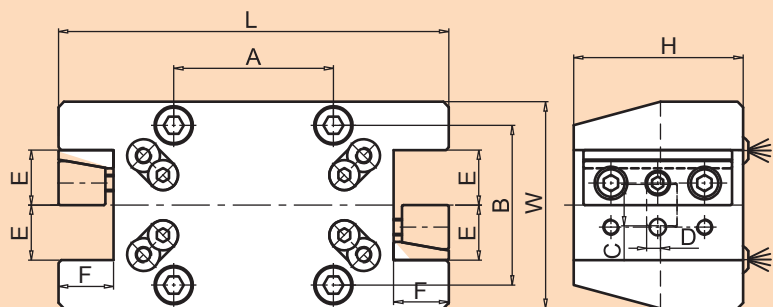
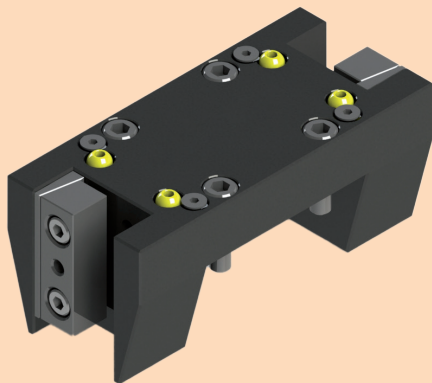


BMT STATIC TOOL HOLDERS RADIAL MULTIPLE TOOL HOLDER TYPE-1



ITEM NAME	ORDER CODE	A	B	C	D	E	F	L	W	H
BMT45-RTHM 15-20 L 124	BM45M1520124	58	58	15	5	20	20	124	75	60
BMT45-RTHM 15-20 L 132	BM45M1520132	58	58	15	5	20	20	132	75	60
BMT55-RTHM 15-25 L 152	BM55M1525152	64	64	15	5	25	25	152	95	65
BMT65-RTHM 18-25 L 149	BM65M1825149	70	73	18	5	25	25	149	96	80
BMT65-RTHM 18-25 L 152	BM65M1825152	70	73	18	5	25	25	152	96	75
BMT75-RTHM 25-32 L 181	BM75M2532181	90	90	25	6	32	32	181	112	85

BMT STATIC TOOL HOLDERS RADIAL MULTIPLE TOOL HOLDER TYPE-2

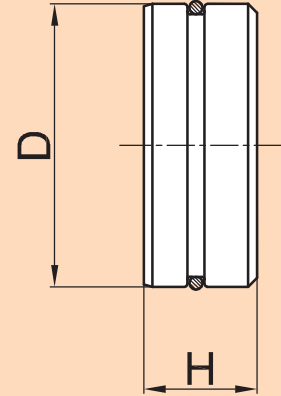


ITEM NAME	ORDER CODE	A	B	C	D	E	F	L	W	H
BMT45-RTHM 15-20 L164	BM45M1520164	58	58	15	5	20	20	164	75	66
BMT55-RTHM 15-25 L188	BM55M1525188	64	64	15	5	25	25	188	86	80

* BMT Static tool Holders can be supplied as per customer drawing

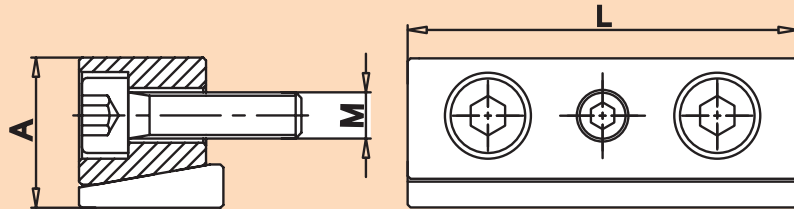


BMT TOOL HOLDERS PLUG



ITEM NAME	ORDER CODE	D	H
BMT45 PLUG	BMT45P	Ø45	25
BMT55 PLUG	BMT55P	Ø55	26
BMT65 PLUG	BMT65P	Ø65	26
BMT75 PLUG	BMT75P	Ø75	32

WEDGE ASSEMBLY



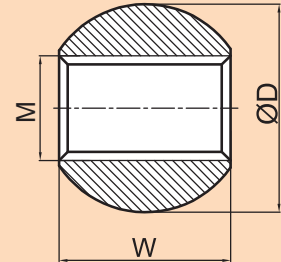
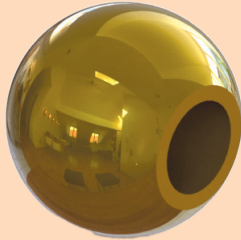
ARTICLE NO.	ITEM NAME	A	L	M
WA1643	W16X43	16	43	6
WA2048	W20X48	20	48	6
WA2054	W20X54	20	54	6
WA2554	W25X54	25	54	8
WA2558	W25X58	25	58	8
WA2568	W25X68	25	68	8
WA3284	W32X84	32	84	10
WA4094	W40X94	40	94	12
WA40109	W40X109	40	109	12
WA207040	W20X70 P40	20	70	8
WA257034	W25X70 P34	25	70	8

* BMT Static tool Holders can be supplied as per customer drawing



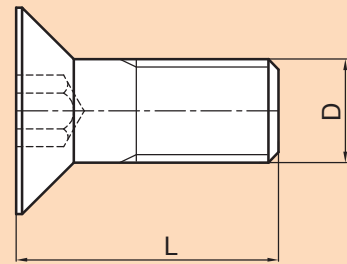
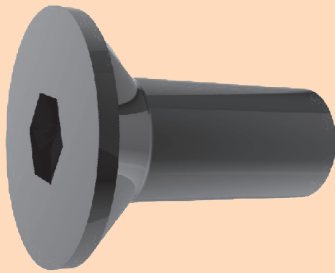


CSK COOLANT BALL SPARE PARTS COOLANT BALL



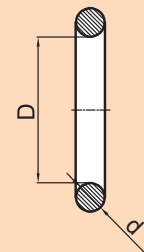
ORDER CODE	ITEM NAME	ØD	W	M
CB85	Ø8XM5	8	7	M5
CB106	Ø10XM6	10	8	M6
CB126	Ø12XM6	12	10	M6
CB146	Ø14XM6	14	13	M6

CSK SCREW



ORDER CODE	ITEM NAME	L	D
	M3X10	10	M3
	M4X12	12	M4
	M5X12	12	M5
	M6X12	10	M6

O RING

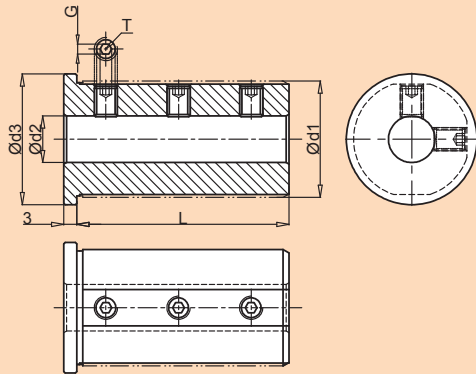


ORDER CODE	ITEM NAME	D	d
OR515	O-Ring Ø5XØ1.5	Ø5	Ø1.5
OR715	O-Ring Ø7XØ1.5	Ø7	Ø1.5
OR725	O-Ring Ø7XØ2.5	Ø7	Ø2.5
OR102	O-Ring Ø10XØ2	Ø10	Ø2

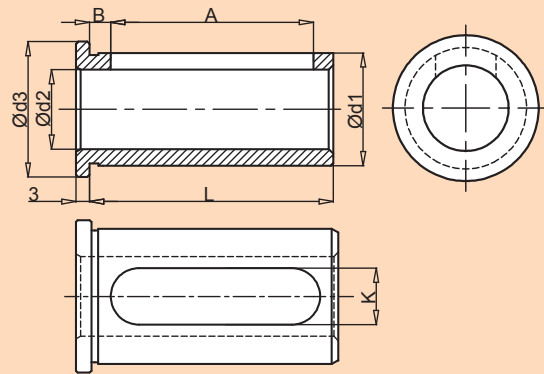




UNIVERSAL REDUCTION SLEEVES



SUITABLE FOR BORING TOOL HOLDERS WITH SMALLER SHANK TOOLS



SUITABLE FOR BORING TOOL HOLDERS WITH LARGE SHANK TOOLS TYPE-K (KEYWAY TYPE)

ARTICLE CODE	Ød1	Ød2	Ød3	L	GRUB SCREW T
RSU200839	20	08	25	39	M6X5
RSU201039		10			M6X5
RSU250850		08			M6X8
RSU251050	25	10	30	50	M8X6
RSU251250		12			M8X6
RSU320859	32	08	37	59	M6X10
RSU321059		10			M8X10
RSU321259		12			M8X8
RSU321659		16			M8X6
RSU400869	40	08	45	69	M6X12
RSU401069		10			M8X12
RSU401269		12			M8X12
RSU401669		16			M8X10
RSU402069		20			M8X8
RSU402569		25			M8X6
RSU500880	50	08	55	80	M6X16
RSU501080		10			M8X16
RSU501280		12			M8X16
RSU501680		16			M10X16
RSU502080		20			M10X12
RSU502580		25			M10X12
RSU503280		32			M10X8

ARTICLE CODE	Ød1	Ød2	Ød3	K	L	A	B
RSUK201239	20	12	25	9	39	32.5	3.5
RSUK201639		16					
RSUK201252	20	12	25	13	52	45.5	3.5
RSUK201652		16					
RSUK251650	25	16	30	13	50	43.5	3.5
RSUK252050		20					
RSUK322059	32	20	37	13	59	51	5
RSUK322559		25					
RSUK403269	40	32	45	17	69	61	5
RSUK504080	50	40	55	17	80	72	5

• Made out of C45 material & toughen to 20±2 HRC

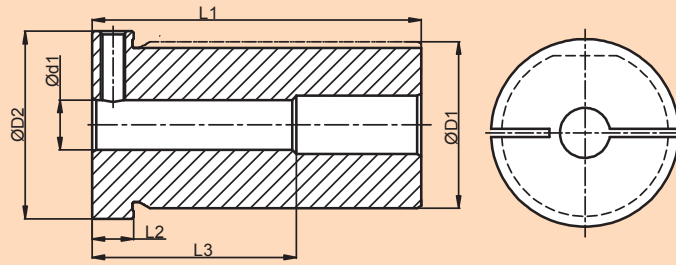
NOMENCLATURE FOR ORDER CODE | REDUCTION SLEEVE - **RS** | UNIVERSAL TYPE - **U** | NILL-SMALLER TOOL SHANK & K-LARGER TOOL SHANK - **K**
TOTAL LENGTH - **XX** | TOOL SHANK DIAMETER - **XX** | TOOL HOLDER BORE - **XX**

• Customized design can be supplied upon request. • All dimensions are in mm.

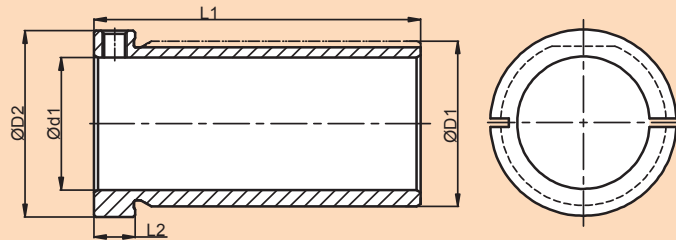




UNIVERSAL SLIT REDUCTION SLEEVES



SUITABLE FOR BORING TOOL HOLDERS WITH SMALLER SHANK TOOLS



SUITABLE FOR BORING TOOL HOLDERS WITH LARGE SHANK TOOLS TYPE-K (KEYWAY TYPE)

MATERIAL ID	ØD1	ØD2	Ød1	L1	L2	L3	L3/Ød1 RATIO
RSSE1E2250860	25	30	08	60	10	50	6
RSSE1E2251060			10			50	5
RSSE1E2251260			12			50	4
RSSE1E2251460			14			50	3.5
RSSE1E2320869	32	37	08	69	10	50	6
RSSE1E2321069			10			50	5
RSSE1E2321269			12			50	4
RSSE1E2321469			14			50	3.5
RSSE1E2400879	40	45	08	79	10	50	6
RSSE1E2401079			10			50	5
RSSE1E2401279			12			50	4
RSSE1E2401479			14			50	3.5
RSSE1E2500890	50	55	08	90	10	50	6
RSSE1E2501090			10			50	5
RSSE1E2501290			12			50	4
RSSE1E2501490			14			50	3.5

MATERIAL ID	ØD1	ØD2	Ød1	L1	L2	L1/Ød1 RATIO
RSSE1E2251660	25	30	16	60	10	3.8
RSSE1E2251860			18			3.3
RSSE1E2252060			20			3.0
RSSE1E2321669			16			4.3
RSSE1E2321869	32	37	18	69	10	3.8
RSSE1E2322069			20			3.5
RSSE1E2322569			25			2.8
RSSE1E2401679	40	45	16	79	10	5.0
RSSE1E2401879			18			4.4
RSSE1E2402079			20			4.0
RSSE1E2402579			25			3.2
RSSE1E2403279	50	55	32	90	10	2.5
RSSE1E2501690			16			5.6
RSSE1E2501890			18			5.0
RSSE1E2502090			20			4.5
RSSE1E2502590			25			3.6
RSSE1E2503290			32			2.8
RSSE1E2504090	40	2.3				

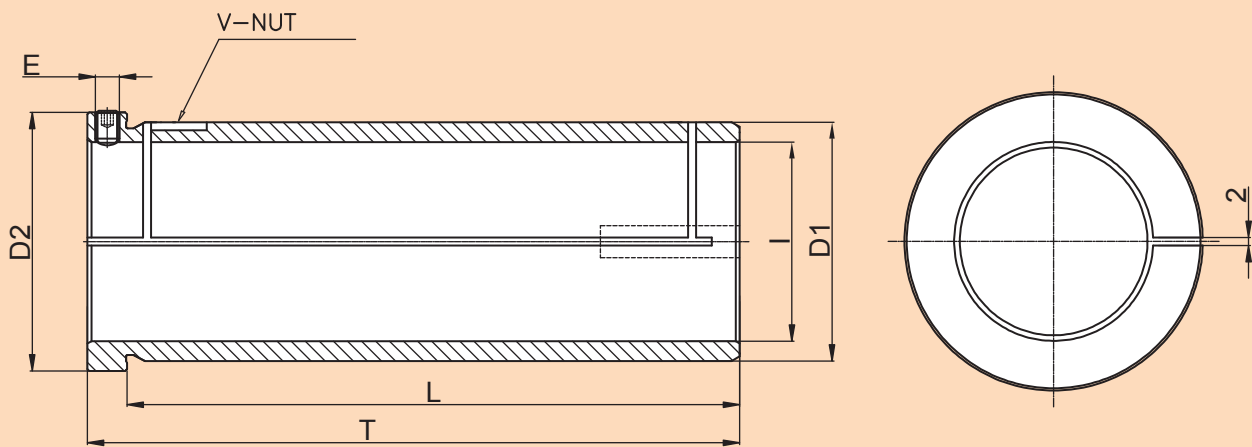
- Made out of En47 material & hardening to 54±2 HRC

NOMENCLATURE FOR ORDER CODE | REDUCTION SLEEVE - **RS** | SPLIT TYPE - **S** | SUITABLE FOR E1 & E2 VARIETY - **E1E2**
TOTAL LENGTH - **XX** | TOOL SHANK DIAMETER - **XX** | VDI TOOL HOLDER BORE - **XX**

- Customized design can be supplied upon request. • All dimensions are in mm.



PU REDUCTION SLEEVES



CODE	D1	I	L	T	D2	E	TYPE	SUITS FOR TOOL HOLDER
PU1S-3225115	32	25	115	125	37	M6	PU1S	PU1S-32-60
PU1S-4032127	40	32	127	137	45	M6	PU1S	
PU1S-5040127	50	40	127	137	55	M6	PU1S	
PU1S-6050154	60	50	154	164	65	M6	PU1S	

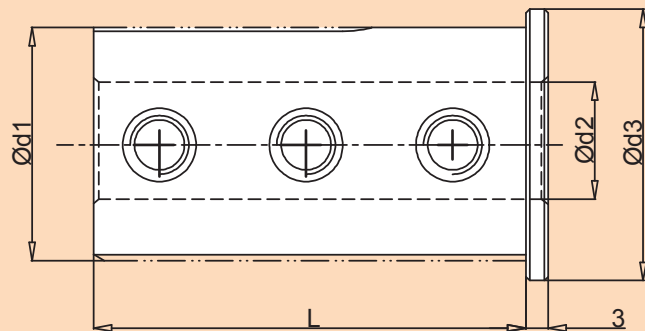
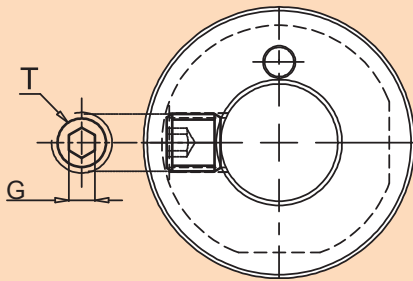
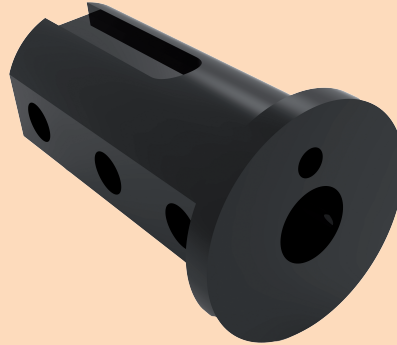
• Made out of En-47 material & hardening to 54±2 HRC

• Customized design can be supplied upon request. • All dimensions are in mm.





THROUGH COOLANT SLEEVES

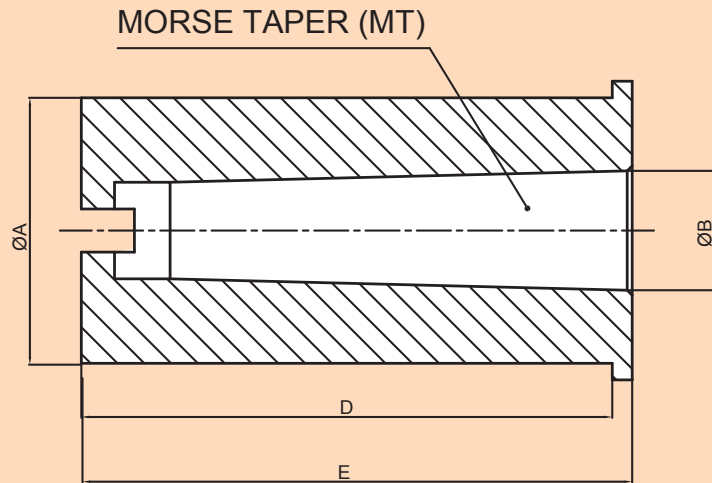
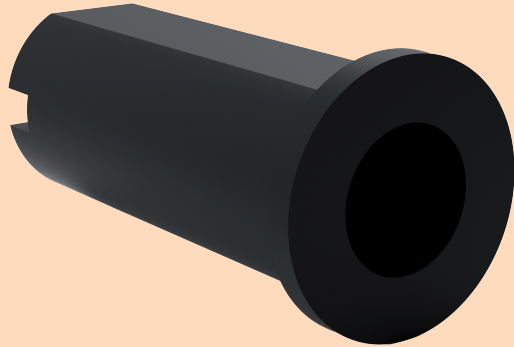


ARTICLE CODE	Ød1	Ød2	Ød3	L	GRUB SCREW T	QTY	G
RSU200839TC	20	08	25	39	M6X5	3	3
RSU250850TC	25	08	30	50	M6X8	3	3
RSU251050TC		10			M8X6	3	4
RSU320859TC	32	08	37	59	M6X10	3	3
RSU321059TC		10			M8X10	3	4
RSU321259TC		12			M8X8	3	4
RSU400869TC	40	08	45	69	M6X12	3	3
RSU401069TC		10			M8X12	3	4
RSU401269TC		12			M8X12	3	4
RSU401669TC		16			M8X10	3	4
RSU500880TC	50	08	55	80	M6X16	3	3
RSU501080TC		10			M8X16	3	4
RSU501280TC		12			M8X16	3	4
RSU501680TC		16			M10X16	3	5
RSU502080TC		20			M10X12	3	5
RSU502580TC		25			M10X12	3	5

- Made out of C45 material & toughen to 20+2 HRC
- Customized design can be supplied upon request. • All dimensions are in mm.



MORSE TAPER REDUCTION SLEEVES



ITEM NAME	A	B	C	D	TYPE	SUIT FOR TOOL HOLDER	SUIT FOR TOOL DISC
RS2025MT1	25	MT1	58	61	3	BH2025CH18, BH2025CH25	STD50820, STD63820 STD80820, STD80820 HD63820, HD80820 STD801220, HD801220
RS2032MT1	32	MT1	77	80	3	BH2032CH18, BH2032CH25	
RS2032MT2	32	MT2	78	81	3	BH2032CH30, BH2032CH35	
RS2532MT1	32	MT1	77	80	3	BH2532CH30, BH2532CH40	STD80825, STD100825 HD80825, HD100825 HD125825, STD1001225 STD1251225, HD1001225 HD1251225
RS2532MT2	32	MT2	78	81	3		
RS2540MT1	40	MT1	78	81	3	BH2540CH30, BH2540CH40	
RS2540MT2	40	MT2	78	81	3		
RS2540MT3	40	MT3	79	92	3		
RS32/4040MT1	40	MT1	80	83	3	BH3240CH40, BH3240CH50 BH4040CH35	STD100832, STD125832 STD160832, HD125832 STD1251232, STD1601232 HD1251232, STD125840
RS32/4040MT2	40	MT2	80	83	3		
RS32/4040MT3	40	MT3	79	92	3		
RS32/4050MT2	50	MT2	89	92	3	BH3250CH40, BH3250CH50 BH4050CH35	
RS32/4050MT3	50	MT3	89	92	3		
RS32/4050MT4	50	MT4	92	115	3		

• Made out of EN-19 material & toughen to 40+2 HRC

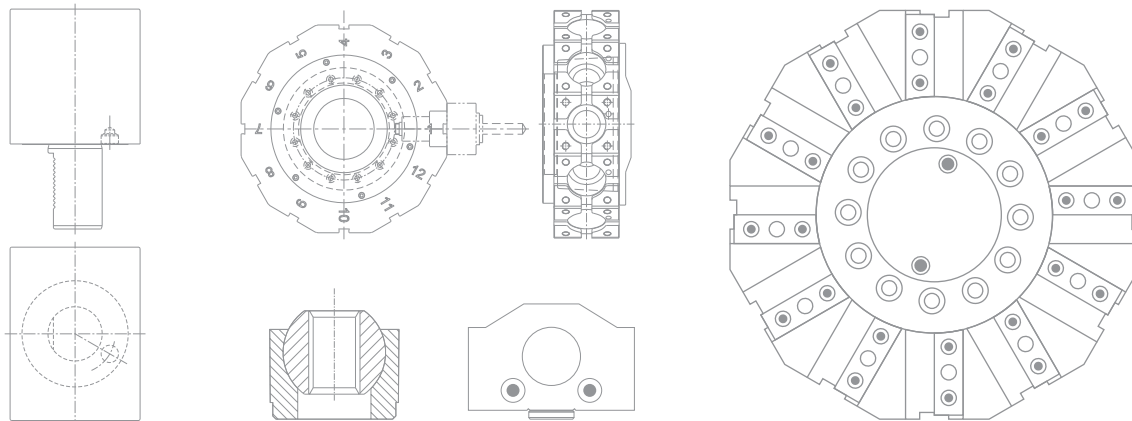
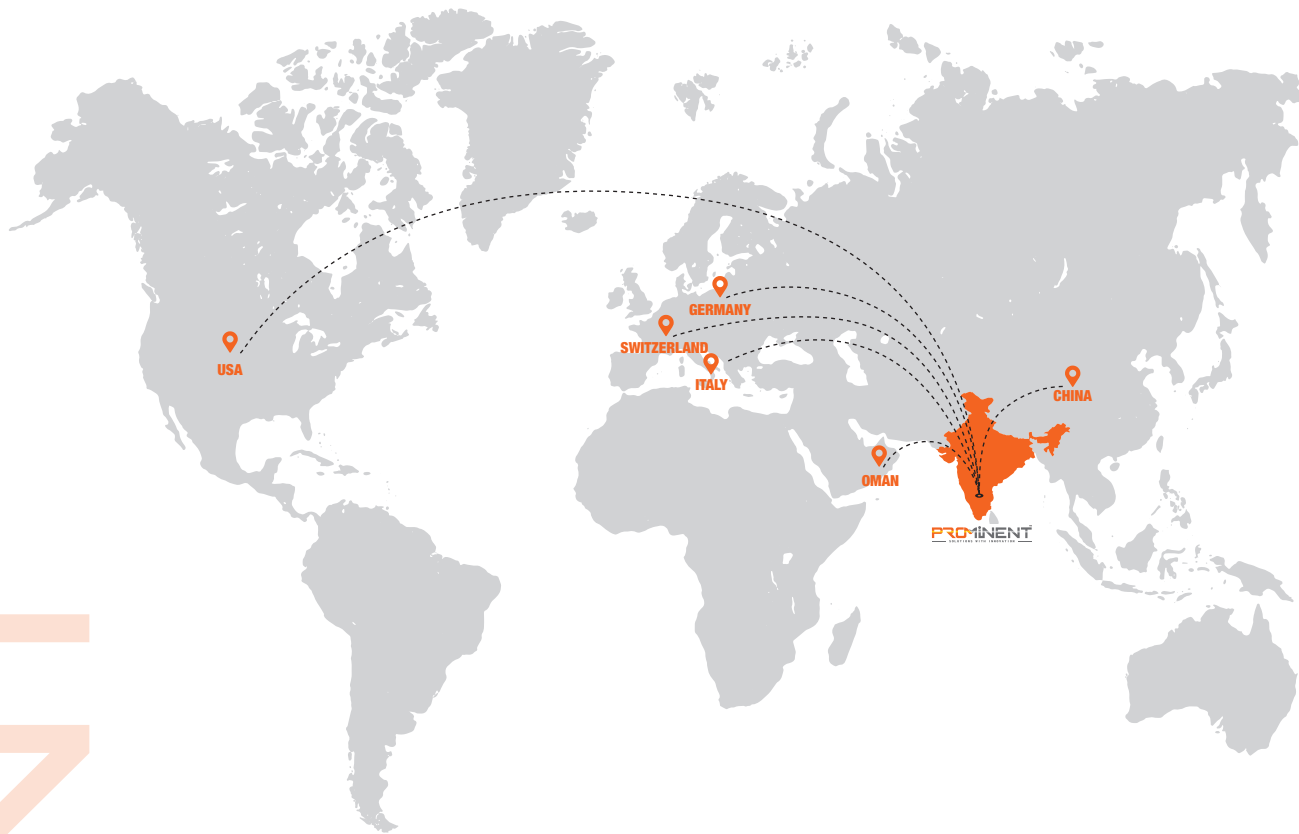




INFRASTRUCTURE



Our Global Presence



Head Office / Manufacturing Facility

Prominent Autotech

310×311/4, 8th Cross 4th Phase Peenya Industrial Area Near NTT, Bengaluru - 560 058.

✉ info@prominentautotech.com,
guna@prominentautotech.com

☎ 080 2658 1755 ☎ +91 99167 01312

www.prominenttools.com

Manufacturing Extension Unit

Prominent Machine Tools

60/61, 10th Cross, Balaji Nagar Peenya Industrial Area Thigalarapalya, Bengaluru - 560 058.

✉ prominentmachinetools@gmail.com

☎ +91 99167 01312



QR Code For
GPS Location



QR Code For
GPS Location